

DATA CENTER

KIO MTY|1

KIO is an international company, founded in 2002, a provider of mission-critical Information Technology services that operates state-of-the-art Data Centers with the highest security, availability and density in Mexico, Colombia, Central America and the Caribbean. KIO hosts a robust and wide ecosystem of different industry sectors in the region within its Data Centers ensuring a professional, redundant, scalable and secure environment.



25°38'57.6"N 100°21'30.8"W

KIO MTY|1 joined the KIO portfolio in 2014, with a technology complex of TIER III characteristics.

Located at Avenida Gomez Morin 350 Sur 2nd floor, Colonia Valle Campestre 66265, San Pedro Garza Garcia, NL.

CHARACTERISTICS



DESIGN

It has a computer room with an area of 686m², reinforced floor with earthquake-proof pedestals and reinforced concrete walls along the entire perimeter of the Data Center.



ELECTRICAL CAPACITY

It has two 225 kVA UPS that are redundant, and they have sufficient capacity to provide uninterrupted and filtered power to all of the installed equipment.



REDUNDANCY

2N in all the mission critical equipment, with two 500 kW emergency power generators, each with its own diesel storage tank, providing 4-day autonomy and maximizing the availability of the Data Center.



ENERGY EFFICIENCY

Cold aisle containment helping deliver an average PUE of 1.7.



MONITORING

It is equipped with a Building Monitoring System (BMS) that ensures the efficient and reliable operation of the data center's entire electromechanical infrastructure.



NOC

Advanced Network Operations Monitoring Center



POWER SUPPLY / SERVICE DROP

Medium-voltage 13.8 kVA power supply / service drop for critical load, from which 2 power lines serve the entire infrastructure.



SECURITY

It has 5 security controls with two-factor authentication (proximity and facial recognition biometrics) using a 7x24x365 Video Surveillance system with a 90-day storage capacity.



FIRE PROTECTION

It has smoke detectors, manual stations and audiovisual alerts in all areas, in compliance with the standards of the National Fire Protection Association (NFPA), as well as an automatic free agent-based fire extinguishing system.



CARRIER NEUTRAL

Open invitation to all Carriers. The current Carriers are:

| ATC | Neutral Networks | Vivaro |
|-----------------|------------------|--------|
| Axtel / Alestra | Telmex | Zayo |
| Cogent | Telum | |
| Flô Networks | Total Play | |

KIO also has a high-speed interconnection network among its Data Centers.

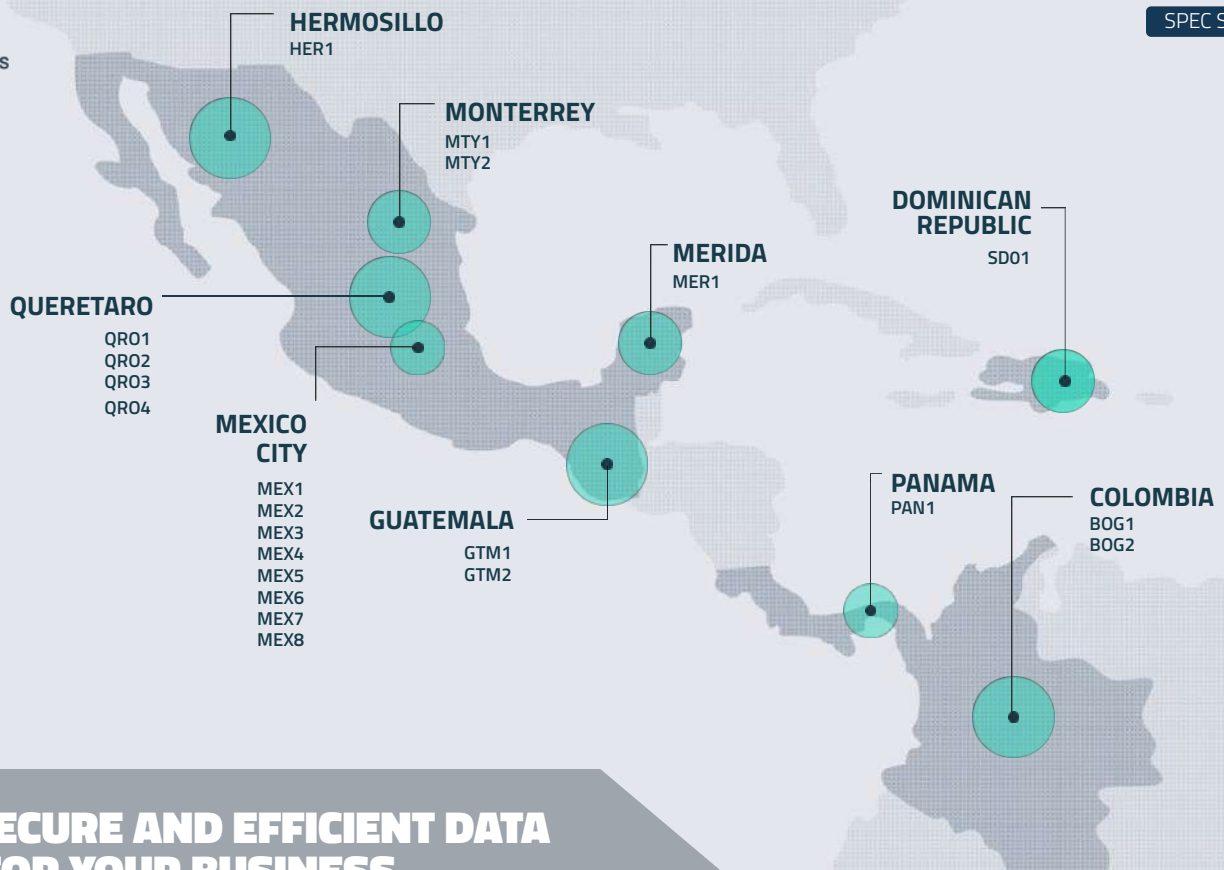


QUALIFIED PERSONNEL

There are trained and qualified operating personnel 7x24x365 days a year.

PHYSICAL CHARACTERISTICS

| | |
|---|--|
| + Type of walls | Reinforced concrete / Durock |
| + Wall thickness | 10 cm (3.93 inches) |
| + Perimeter wall | Yes |
| + Construction of perimeter wall | Reinforced concrete / Durock |
| + Wheelchair access | Yes |
| + Dedicated Data Center building | Yes |
| + Distance to a police station | 10.3 km (6.40 miles) |
| + Distance to a fire station | 4.1 km (2.54 miles) |
| + Data Hall No1 technical floor area | 306 m ² (3,293 ft ²) |
| + Raised floor - Concentrated load | 405 kg (892.87 lb) |
| + Raised floor - Uniform load | 1,200 kg/m ² (245.78 lb/ft ²) |
| + Raised floor - Impact load | 90 kg (198.41 lb) |
| + Raised floor - Last load | 1,406 kg (3,099 lb) |
| + Maximum cabinet capacity | 133 aprox |
| + Availability of space with perimeter cage | Yes |
| + Height above sea level (meters) | 537 m (1,761 ft) |
| + Distance to the ocean (kilometers) | 306.2 km (190 millas) |



GLOBAL, SECURE AND EFFICIENT DATA CENTERS FOR YOUR BUSINESS

POWER CHARACTERISTICS

| | |
|-------------------------------|------------------------------------|
| + Redundancy | 2N |
| + Availability | ICREA Level III |
| + Design capacity in m2 | 0.595 kW / IT |
| + UPS capacity | 225 kVA |
| + Transformer capacity | 1,000 kVA |
| + Number of power connections | 1 |
| + UPS autonomy time | 7 minutes |
| + Diesel autonomy time | 4 days |
| + Total diesel tank capacity | 9,000 liters (2,377.548 gl) |
| + Number of generators | 2 |
| + Total generator capacity | 500 kW |

ELECTROMECHANICAL CHARACTERISTICS (COOLING)

| | |
|---------------------------------------|------------|
| + Number of total units | 9 |
| + Number of redundant units | 3 |
| + Tons of cooling for the Data Center | 110 |

SECURITY

| | |
|--------------------------------|--|
| + Access control | Mantrap |
| + Authentication factors | Two (Facial biometrics and fingerprint) |
| + Visitor log | Yes |
| + 7x24 Security personnel | Yes |
| + Security cameras | Yes |
| + Minimum DVR recording time | 90 days |
| + Fire detection | VESDA |
| + Automatic fire extinguishing | GAS extinguishment |

COMMUNICATIONS

| | |
|----------------------|----------------------------------|
| + Copper wiring | Category 6A or higher |
| + Fiber wiring | Single mode and multimode |
| + Wire covering | Plenum and/or LSOH |
| + Space for Carriers | Yes |
| + Site Entry | Yes |

CERTIFICATIONS

- + ICREA Level III
- ISO/IEC37001:2016

